

Network Safeworking Rules and Procedures

Temporary Speed Restrictions

Rule Number: 3025

Arc Infrastructure maintains the master for this document and publishes the current version on the Arc Infrastructure website. All changes and updates to the Network Safeworking Rules and Procedures are authorised by the Arc Infrastructure Rule Book Committee. This document is uncontrolled when printed.

Document History

Version	Effective Date	Pages updated	Reasons for change
2.01	21 11 2022	All	Review

Table of Contents

1.	Purpose.....	3
2.	General	3
2.1	Advice of a TSR	3
3.	Types of Signs	4
3.1	Temporary Speed Restriction Ahead Sign.....	4
3.2	Temporary Speed Restriction Start Sign.....	5
3.3	Temporary Speed Restriction End Sign.....	5
3.4	Placement	5
3.5	Adjoining TSRs.....	6
4.	General Arrangement of TSR Signs.....	6
4.1	Diverging Routes.....	8
5.	Keeping Records.....	8
6.	References.....	8
7.	Effective Date.....	8

1. Purpose

The purpose of this rule is to set out the protocols for applying a *Temporary Speed Restriction (TSR)*. The object of a *TSR* is to reduce the speed of *Rail Traffic* to ensure safe passage over a *Section of Track* when the *Track* is not safe for *Normal Speeds*.

2. General

TSR's are applied by an *Infrastructure Representative*.

A *TSR* overrides any existing higher speed.

A *TSR* may be applied due to:

- *Infrastructure* conditions;
- risks to workers; or
- weather conditions.

2.1 Advice of a TSR

Where possible *Rail Traffic Crews* are advised about a *TSR* by *TSR* signs, and by:

- the *Driver Information System*; or
- the *Issue of a Condition Affecting the Network (CAN)* warning, in accordance with Rule 2009 Reporting and Responding to a Condition Affecting the Network (CAN).

If it is not possible to place *TSR* signs immediately, *Rail Traffic Crews* must be given written or verbal advice of the *TSR*, before they enter the affected portion of *Track*. *TSR* signs must be placed as soon as is practical after the speed restriction is imposed.

Rail Traffic Crews must keep the advice for the duration of the journey.

3. Types of Signs

Temporary Speed Restriction ahead signs:

- indicate that a *Temporary Speed Restriction* is ahead; and
- display the maximum speed permissible for each *Rail Traffic* type over the affected portion of *Track*.

Temporary Speed Restriction start signs indicate:

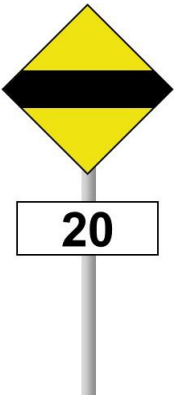
- to *Rail Traffic Crews*, that they are entering the limits of a *TSR*; and
- the maximum speed permissible for each *Rail Traffic* type over the affected portion of *Track*.

Temporary Speed Restriction end signs indicate to *Rail Traffic Crews* that they are leaving the limits of a *TSR*.

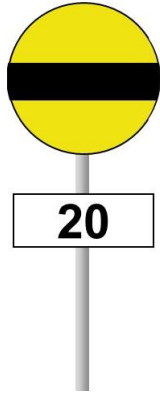


NOTE: In *Bi-Directional* areas where the *TSR* applies in both directions, the back of the *TSR* start sign will indicate to *Rail Traffic Crews* that they are leaving the limits of a *TSR*.

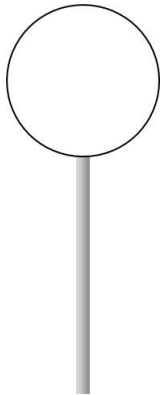
3.1 Temporary Speed Restriction Ahead Sign

Sign	Description	Required Action
	<p><i>Temporary Speed Restriction</i> ahead signs are diamond shaped with a yellow background and a horizontal black stripe.</p> <p>This sign is placed 2500 metres before a <i>Temporary Speed Restriction</i> start sign.</p> <p>Placed below the <i>Temporary Speed Restriction</i> ahead sign is a maximum speed sign displaying the maximum speed permitted for the restricted area.</p>	<p><i>Rail Traffic</i> should Proceed, being prepared to <i>Travel</i> at the speed indicated on the maximum speed sign placed below the Speed Restriction ahead sign.</p> <p>Note: If no maximum speed sign is displayed below the <i>Temporary Speed Restriction</i> ahead sign, <i>Rail Traffic Crews</i> must be prepared to reduce speed as detailed in the <i>Drivers Information</i> documentation, or where this is not available, to 15kph over the <i>TSR</i>.</p>

3.2 Temporary Speed Restriction Start Sign

Sign	Description	Required Action
	<p><i>Temporary Speed Restriction</i> start signs are circular shaped with a yellow background with a horizontal black stripe.</p> <p>This sign is placed 50 metres before the area covered by a <i>Temporary Speed Restriction</i>.</p> <p>Placed below the <i>Temporary Speed Restriction</i> start sign is a maximum speed sign displaying the maximum speed permitted for the restricted area.</p>	<p><i>Rail Traffic</i> must Proceed at the speed shown on the maximum speed sign placed below the <i>Temporary Speed Restriction</i> sign.</p> <p>Note: If no maximum speed is displayed below the <i>Temporary Speed Restriction</i> start sign, <i>Rail Traffic Crews</i> must be prepared to reduce speed as detailed in the <i>Drivers Information</i> documentation, or where this is not available, to 15kph over the <i>TSR</i>.</p>

3.3 Temporary Speed Restriction End Sign

Sign	Description	Required Action
	<p><i>Temporary Speed Restriction</i> end signs are white and circular.</p> <p>This sign is placed 50 metres beyond the <i>Temporary Speed Restriction</i> area.</p> <p>Note: In <i>Bi-Directional</i> areas where the <i>TSR</i> applies in both directions, the back of the <i>TSR</i> start sign will indicate to <i>Rail Traffic Crews</i> that they are leaving the limits of a <i>TSR</i>.</p>	<p><i>Rail Traffic</i> can return to the <i>Authorised Track Speed</i>, once the <i>Rail Traffic Consist</i> has passed beyond the <i>Temporary Speed Restriction</i> end sign.</p>

3.4 Placement

TSR signs must be placed:

- wherever possible, to the left of the line to which the *TSR* applies; and
- where they can be clearly seen by *Rail Traffic Crews*.

3.5 Adjoining TSRs

TSR's may *Adjoin* provided the TSR signs can be placed so that there is not two *Temporary Speed Restriction* ahead signs before a *Temporary Speed Restriction* sign.

Where the distance between TSRs will not permit the clear separation of signs, the lower speed must apply from the first TSR to the end of the lowest TSR, where:

- a *Temporary Speed Restriction* end sign must be placed; or
- a *Temporary Speed Restriction* sign placed, displaying a higher maximum speed sign.

Where a higher speed TSR applies at the end of a lower TSR then a *Temporary Speed Restriction* ahead sign is not required and a *Temporary Speed Restriction* sign with the higher maximum speed sign must be placed at the start of that TSR.

4. General Arrangement of TSR Signs

Figure 3025-1 General arrangement of TSR signs for single *Bi-Directional Track*.

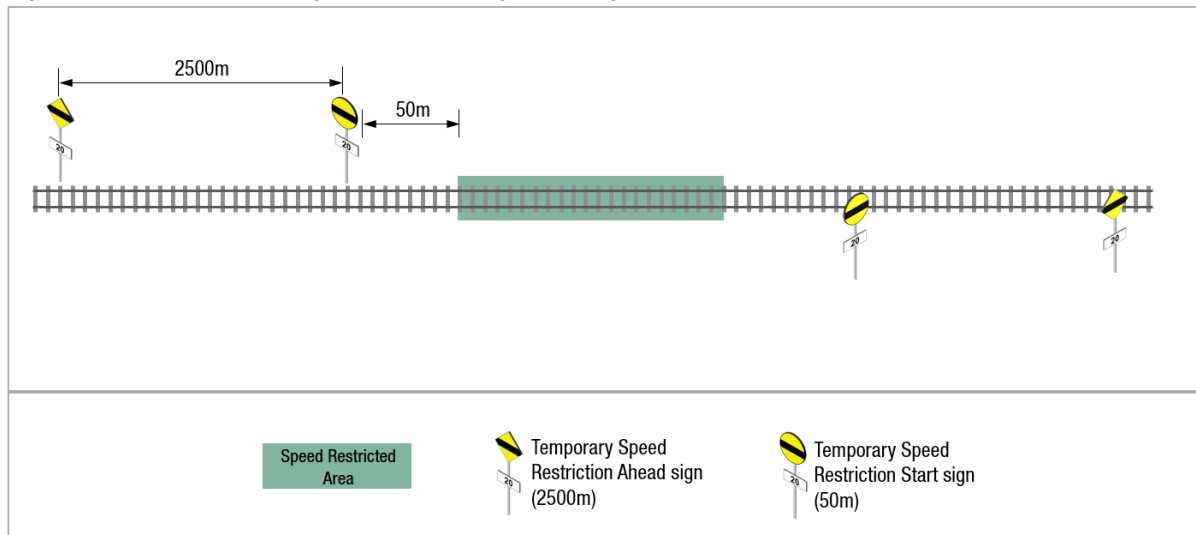


Figure 3025-2 General arrangements of *TSR* signs on double *Uni-Directional Track*.

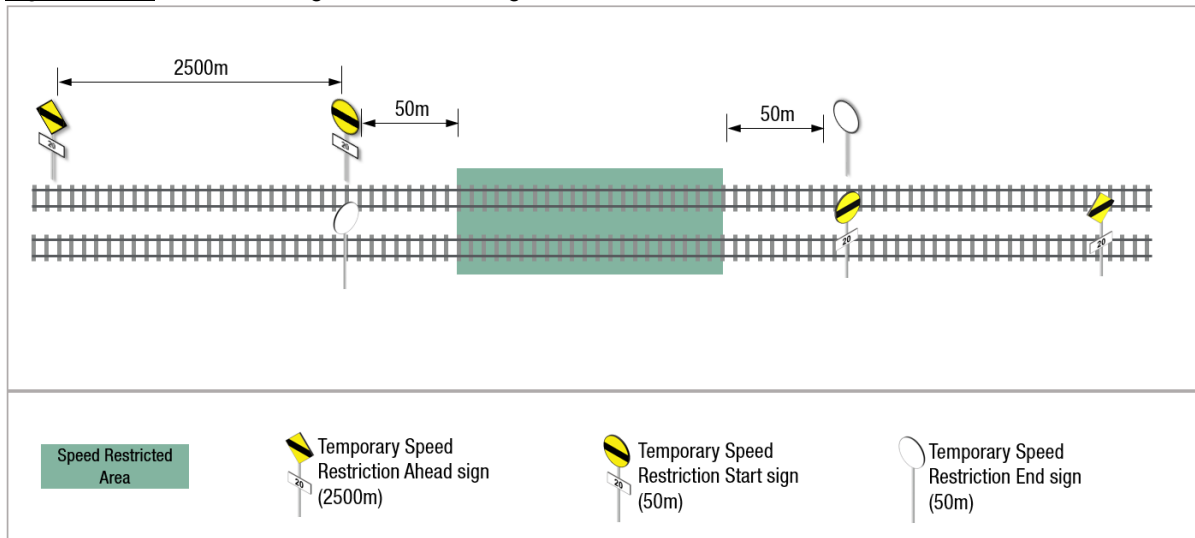
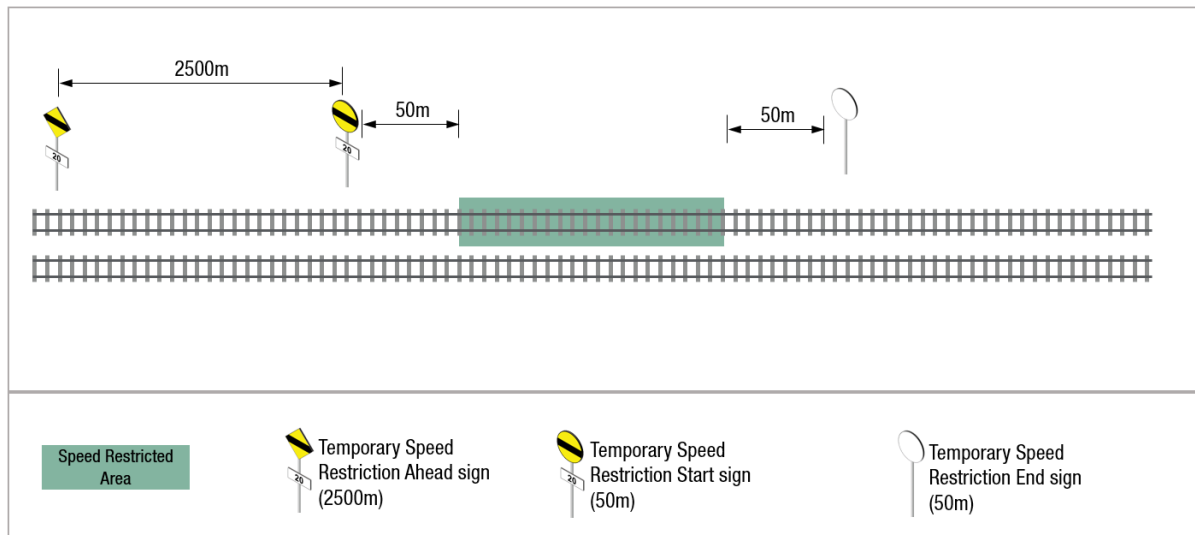


Figure 3025-3 General arrangements of *TSR* signs on double *Uni-Directional Track* where only one line is affected.

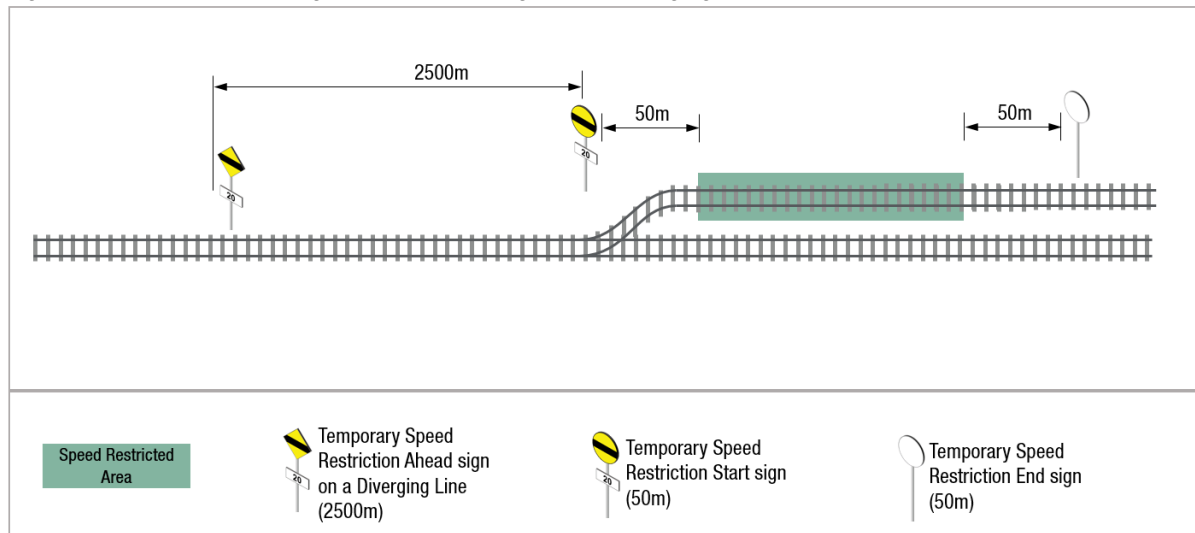


4.1 Diverging Routes

TSR signs must be placed on all lines that might give access to the affected line.

If the *TSR* applies on a diverging *Route*, the *Temporary Speed Restriction* ahead sign and *Temporary Speed Restriction* start sign will display an arrow in the direction of the divergence, or additional text to indicate the *Track* to which the speed restriction applies.

Figure 3025-4 General arrangements for *TSR* signs for a diverging line.



5. Keeping Records

Infrastructure Representatives, Rail Traffic Crews and Network Controllers must keep a *Permanent Record* of the details of *TSR*'s.

6. References

2009 Reporting and Responding to a Condition Affecting the Network (CAN)

7. Effective Date

21 November 2022