

# Network Safeworking Rules and Procedures

## Clipping and Securing Points

Procedure Number:-9000

---

Arc Infrastructure maintains the master for this document and publishes the current version on the Arc Infrastructure website. All changes and updates to the Network Safeworking Rules and Procedures are authorised by the Arc Infrastructure Rule Book Committee. This document is uncontrolled when printed.

---

#### Document History

Version	Effective Date	Pages updated	Reasons for change
2.02	21 11 2022	3, 4	Securing points for worksite protection and points clips to secure points open

## **Table of Contents**

1.	Purpose.....	3
2.	General .....	3
3.	Fitting a Points Clip .....	4
3.1	Competent Worker .....	4
4.	References.....	4
5.	Effective Date.....	4

# 1. Purpose

The purpose of this procedure is to outline how *Points* are *Secured* in a normal or reversed position. *Points* clips may also be used to *Secure* expansion joints for *Wrong Running-Direction* movements.

# 2. General

*Facing Points* on *Running Lines* must be set and *Secured* for the safe passage of *Rail Traffic*.

*Points* may be set and *Secured* to divert *Rail Traffic* away from a worksite as required for that worksites *In-Field Protection*.

Where the *Points* can be set and *Secured* in the *Network Control System*, the *Network Controller* must do so.

Where a *Competent Worker* requires *Blocking Facilities* to be applied to *Points*, Rule 6003 Blocking Facilities applies.

The *Points* must be clipped if it cannot be assured that the *Points* will remain in the correct position.

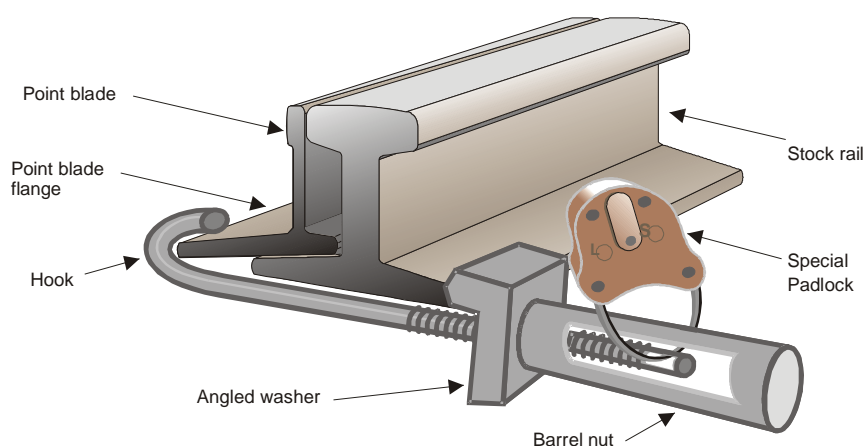
Mechanical *Points* must be set and padlocked using a *Special Padlock*.



**NOTE:** Where mechanical *Points* cannot be padlocked, they must be clipped.

*Point* clips must be padlocked using a *Special Padlock*. If the *Points* clip cannot be padlocked, the *Points* must be inspected before each *Rail Traffic* movement.

Figure 9000-1 Example of a fitted *Points* clip



# 3. Fitting a Points Clip

## 3.1 Competent Worker

Make sure that you can do the work safely.

Where necessary, get *Authority* from the *Network Controller* to clip the *Points* and an assurance the *Points* will not be operated.

Make sure that you use the correct type of *Points* clip.

Make sure that the *Points* are in the correct position.

Fit the *Points* clip at the correct position, as close to the toe of the *Point* blade as possible, for that set of *Points*.



**WARNING: Over tightening the *Points* clip can cause rail roll that may lead to derailment.**

Make sure that the *Points* clip is fitted:

- to the underside of the rail;
- between the sleepers;
- with the jaws of the *Points* clip positioned on the rails and tighten; and
- where practicable, use a *Special Padlock* to padlock the *Points* clip.

Where “K” blades are in use, make sure the “K” blades are aligned with the main *Points* and clip the closed “K” blade.



**NOTE: In some cases, such as when connecting rods have been disconnected for maintenance, it may be necessary to clip all *Points* blades to ensure the safe passage of *Rail Traffic* over them.**

**Some *Points* clips have been designed to hold *Points* blades open, as in the case of *Catch Points*.**

Make sure that the *Points* are properly closed and that the *Route* is correct before allowing *Rail Traffic* to *Travel*.

# 4. References

6003 Blocking Facilities

# 5. Effective Date

21 November 2022