

# Network Safeworking Rules and Procedures

## Using Railway Track Signals

Procedure Number: 9004

---

Arc Infrastructure maintains the master for this document and publishes the current version on the Arc Infrastructure website. All changes and updates to the Network Safeworking Rules and Procedures are authorised by the Arc Infrastructure Rule Book Committee. This document is uncontrolled when printed.

---

#### Document History

Version	Effective Date	Pages updated	Reasons for change
2.01	31 10 2020	Title Page	Rule reference changed to Procedure Number

## **Table of Contents**

1.	Purpose.....	3
2.	General .....	3
3.	Railway Track Signal Response Table.....	3
3.1	Responding to a Single Railway Track Signal.....	4
4.	Placing Railway Track Signals .....	4
5.	Placing of Railway Track Signals Near Public Crossings and Platforms .....	5
6.	Removal of Unused Railway Track Signals.....	5
7.	Storing Railway Track Signals.....	5
8.	Dealing with Failed Railway Track Signals.....	6
9.	References.....	6
10.	Effective date .....	6

# 1. Purpose

This procedure outlines how *Railway Track Signals* are used to warn *Rail Traffic Crews*.

# 2. General

*Railway Track Signals* consist of an orange plastic disc containing a chemical composition and are sealed. A wire piece is attached and is used to *Secure* the *Railway Track Signal* to the *Track*.

When the *Rail Traffic Travels* over the *Railway Track Signal*, a chemical reaction takes place due to the pressure and a loud noise is created.

*Railway Track Signals* are used to protect workers, worksites and *Obstructions* on *Track* in the *Network*.

The number of *Railway Track Signal* explosions together with associated signs indicate what *Rail Traffic Crews* must do.

# 3. Railway Track Signal Response Table

Figure 9004-1 RTS response table.

Number of explosions	Rail Traffic Crew response
Two	Sound one long <i>Whistle</i> . Reduce to and <i>Travel at Restricted Speed</i> . Look for and obey any warning signals. In the absence of any warning or <i>Handsignal</i> , be prepared to stop within 2500 metres.
Three	Sound one long <i>Whistle</i> . Stop immediately. If not advised by a <i>Protection Officer</i> as to the cause, contact the <i>Network Controller</i> .

### 3.1 Responding to a Single Railway Track Signal

If *Rail Traffic* has not previously travelled over any *Railway Track Signals* and explodes a single *Railway Track Signal*, the *Rail Traffic Crew* must:

- sound one long *Whistle*.
- reduce to and *Travel at Restricted Speed*.
- look for and obey any warning signals.
- tell the *Network Controller*.
- be prepared to stop within 2500 metres, in the absence of any warning or *Handsignal*.

If *Rail Traffic* has already travelled over two *Railway Track Signals* and explodes a single *Railway Track Signal*, the *Rail Traffic Crew* must:

- sound one long *Whistle*.
- stop immediately.
- contact the *Network Controller*, if not advised by a *Protection Officer* as to the cause.

## 4. Placing Railway Track Signals



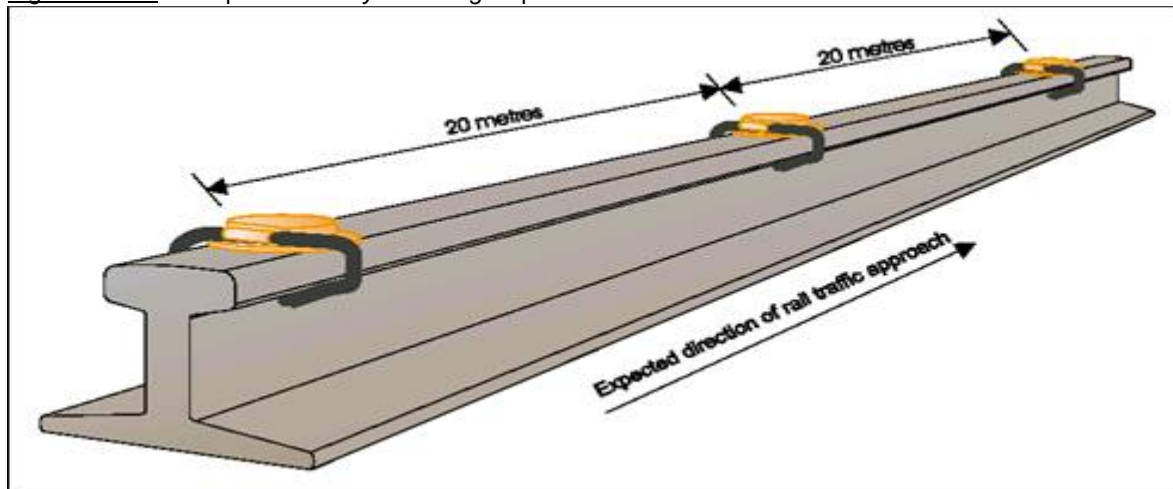
**WARNING: Except in *Emergencies*, do not use *Railway Track Signals*:**

- **underground;**
- **in tunnels;**
- **in steep-sided cuttings;**
- **within 20 metres of workers; or**
- **where prohibited by *Arc Infrastructure*.**

Competent Workers must place *Railway Track Signals*:

- on all rails of the line to be *Protected*, including all 3 rails where there are *Dual Gauge Tracks*:
  - opposite each other to ensure they explode simultaneously;
- on the departure side of *Fixed Signals*;
- on the approach side of stop signs;
- centrally on the railhead with the clasp facing towards the expected direction of *Rail Traffic* approach;
- by bending the clasps around the railhead; and
- 20 metres apart to ensure distinct and separate explosion.

Figure 9004-2 Example of *Railway Track Signal* placement.



## 5. Placing of Railway Track Signals Near Public Crossings and Platforms

*Railway Track Signals* must not be placed within 50 metres of any *Level Crossing* or *Platform*. Where necessary, the distance must be increased beyond the *Level Crossing* or *Platform*.

## 6. Removal of Unused Railway Track Signals

Where the placement of *Railway Track Signals* required for *Protection* no longer exists, all unused *Railway Track Signals* must be removed from all rails and accounted for.

## 7. Storing Railway Track Signals

*Competent Workers* must:

- return unused *Railway Track Signals* to their containers; and
- keep packed *Railway Track Signals* in a *Secure* place.

## 8. Dealing with Failed Railway Track Signals

If *Railway Track Signals* do not explode when run over by *Rail Traffic*:

- leave failed *Railway Track Signals* on the rail;
- report the failure immediately to a Supervisor; and
- if necessary, place new *Railway Track Signals* on the railhead.



**NOTE:** When dealing with failed *Railway Track Signals*, *Competent Workers* must refer to the *Manufacturer's Material Safety Data Sheet*.

## 9. References

Nil

## 10. Effective date

3 February 2020